

Getac

Windows®. Life without Walls™.
Getac recommends Windows 7.

Empower Your Mission

*Feature-rich Rugged Notebook
for Any Demanding Environment*

Getac B300
Fully Rugged Notebook



B300

Fully Rugged
Notebook



Long Battery Life



QuadraClear™ Technology



Night Vision



Back Light Keyboard



Fanless

- Cutting-edge Getac QuadraClear™ Sunlight Readable Technology: Optional 1200 Nits LCD with Touchscreen
- Up to 12 Hours of Battery Life**
- MIL-STD-810G Certified and IP65 Certified
- Optional MIL-STD-461F Certified
- Optional Salt Fog Compliance
- Optional Night Vision
- Optional UL1604 Class 1, Division 2, Group A, B, C, D



The B300 is a hard-as-nails road warrior designed to be productive and worry-free mobile computing, and it is fully customizable. It is MIL-STD-810G certified and IP65 certified, boasting: a magnesium alloy case, a shock-protected HDD, vibration and shock resistance, and sealed I/O caps and doors to prevent damage from solid particles and moisture. The B300 embraces several advanced security features to safeguard important data, including a fingerprint scanner, TPM 1.2, and an optional smart card reader. It also includes comprehensive connectivity options of Bluetooth, WLAN, GPS, and 3G.

Besides an extensive list of connectivity, security options, and up to 12 hours of battery life**, the B300 features an ultra-bright 13.3" QuadraClear™ sunlight readable display. The elective 1200 nits display solution leads the industry with an unmatched effective contrast ratio that makes the B300 the ideal choice for daylight viewing; all of the 1200 nits displays have adopted mercury-free LED lamps.

I/O Ports



Back Side

- DC in Jack x1
- USB 2.0 x 1
- Docking connector x 1
- External VGA x 1
- Serial port x 2



Left Side

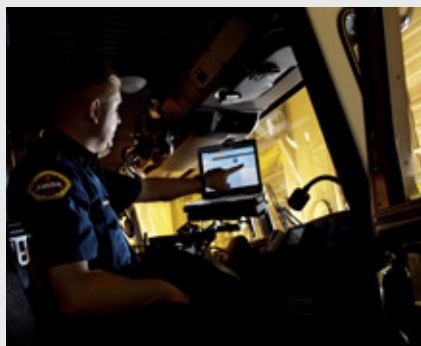
- Battery pack x 1
- Media bay x 1



Right Side

- HD drive x 1
- Expansion card slot x 2
- USB 2.0 x 2
- IEEE 1394a x 1
- Multi-card reader x 1
- Modem (RJ11) x 1
- LAN (RJ45) x1
- Audio output x 1
- Microphone x 1
- External GPS antenna port (only with optional GPS) x 1

Industry Applications



Public Safety

B300 is especially designed for rescuers, firefighters, ambulance crew, and policemen who spend prolonged periods of time inside a vehicle on missions. Unlike other fixed-mount models, its vehicle dock allows easy installation and removal, resulting in greater user mobility. The computer can be easily moved between the office space and the police car, fire truck, or other vehicles. Built-in Wi-Fi and 3G technology enable investigation report uploads and police database access anytime.



Military

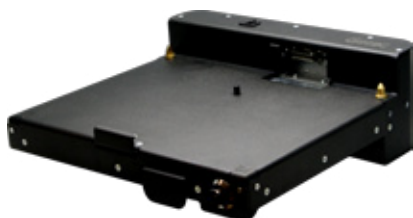
Featuring sunlight readable and night vision display, IP65 certified B300 is highly versatile and customizable to suit any kind of military environment – from battle array simulation in the glaring sunlight, night time shooting training in the wilds, military equipment management and maintenance, to vehicle diagnosis. B300 is a powerful and durable computer custom made for outdoor usage.



Professional Service

The IP65-certified, drop resistant B300 is a must for ecology scientists or environment surveyors working under various extreme humidity or temperatures. Its optional Salt Fog anticorrosion coating and special mechanical design also makes it ideal for navigation.

Optional Accessories



Vehicle Dock

W x D x H: 307.3 x 325.1 x 106.7mm
(12.1" x 12.8" x 4.2")

- USB 2.0 x 4
- LAN (RJ45) x 1
- Audio output x 1
- Microphone x 1
- DC in Jack x 1
- External VGA x 1
- Serial port x 2
- PS/2 x 2



Office Dock

W x D x H: 329 x 124.8 x 94mm
(13" x 4.9" x 3.7")

- USB 2.0 x 4
- LAN (RJ45) x 1
- Audio output x 1
- Microphone x 1
- DC in Jack x 1
- External VGA x 1
- Serial Port x 2
- PS/2 x 2



Battery Charger



Carrying Bag



2nd HDD



2nd Battery
(7650mAh)



Vehicle Adapter
(90W, 11-16VDC
and 22-32VDC)



MIL-STD-461F
Certified AC Adapter



Stylus



AC Adapter
(90W, 100-240VAC)



Main Battery
(7650mAh)

Specifications

Operating System	Genuine Windows® XP Professional Genuine Windows Vista® Business Genuine Windows® 7 Professional
Mobile Computing Platform	Intel® Centrino® Technology - Intel® Core™2 Duo Processor L7500 1.6GHz - 800 MHz FSB - 4MB L2 cache - Mobile Intel® GM965 Express chipset
VGA Controller	Intel® Graphics Media Accelerator X3100 Max. 384MB shared memory
Display	13.3" TFT LCD XGA (1024 x 768) 500 nits display with optional touchscreen Optional 1200 nits QuadraClear™ sunlight readable display with touchscreen
Storage & Memory	1GB DDR2 expandable to 4GB SATA HDD 160GB / 250GB Optional SATA SSD 80GB / 160GB
Keyboard	Membrane keyboard Optional LED backlit membrane keyboard Optional LED backlit rubber keyboard
Pointing Device	Touchscreen - Optional pressure sensitive touchscreen Touchpad - Glide touchpad with scroll bar
Expansion Slot	PCMCIA Type II x 2 or Type III x 1 Optional ExpressCard 34/54mm (occupies one PCMCIA type II slot) x 1 Multi memory card reader x 1
Multimedia Bay	DVD super multi drive Optional 2nd battery Optional 2nd storage: HDD 160 / 250 GB; SSD 80 / 160 GB
I/O Interface	Serial port (9-pin; D-sub) x 2 External VGA (15-pin; D-sub) x 1 Audio output (Mini-jack) x 1 Microphone (Mini-jack) x 1 DC in Jack x 1 USB 2.0 (4-pin) x 3 Modem (RJ11) x 1 LAN (RJ45) x 1 IEEE 1394a x 1 External GPS antenna port (only with optional GPS) x 1 Docking connector x 1 Optional RF antenna pass-through for WLAN and WWAN

Communication Interface	10/100/1000 base-T Ethernet 56K ITU V.92 modem Intel® Wireless WiFi Link 5300; 802.11 a/b/g/n Bluetooth (v2.1+EDR class 2) Optional GPS (with internal antenna and external MMCX connector) Optional Gobi™2000 mobile broadband
Software	Getac Utility Adobe® Reader® CompuTrace® Compatible BIOS
Security Feature	TPM 1.2 Fingerprint scanner Optional smart card reader (occupies one PCMCIA type II slot) Kensington lock
Power	AC adapter (90W, 100-240VAC, 50 / 60Hz) Li-Ion smart battery (7650mAh) (up to 12 hours of battery life)* Optional Media Bay 2nd Li-Ion smart battery (7650mAh)
Dimension (W x D x H) & Weight	303.5 x 263 x 60mm (11.9" x 10.35" x 2.36"), 3.5kg (7.7lbs)
Rugged Feature	MIL-STD-810G certified and IP65 certified Optional MIL-STD-461F certified Optional UL1604 Class 1, Division 2, Group A, B, C, D Full magnesium alloy case Shock-protected removable HDD Vibration & drop resistant Optional salt fog compliance Optional night vision
Environmental Specification	Temperature**: - Operating: 0°C to 60°C / 32°F to 140°F - Optional low temperature: -20°C / -4°F - Storage: -51°C to 71°C / -60°F to 160°F Humidity: - 95% RH , non-condensing

* Battery life testing conducted under BatteryMark 4.0.1. Battery performance will vary upon software applications, wireless settings, power management settings, LCD brightness, customized modules and environmental conditions. The battery has a limited number of charge cycles and may eventually need to be replaced by a Getac service provider. Battery life and charge cycles vary by use and settings.

** Tested by a national independent third party test lab following MIL-STD-810G.



RUGGEDMOBILE
TOUGH TECHNOLOGY
FOR TOUGH ENVIRONMENTS

RUGGED MOBILE Systems Ltd.
Sandbach Enterprise Centre
Wesley Avenue
Sandbach
CW11 1DG

0845 652 0816
sales@rm-systems.co.uk
www.rm-systems.co.uk