

Semi-Rugged PDA
BM-150R



pibion
Empowering Mobility

BM-150R

INDUSTRIES



Education



Retail



Public Transport



Hospitality



Healthcare

KEY FEATURES & BENEFITS

Functionality



A-GPS, HSDPA, WLAN

BM-150R is the Enterprise-class PDA integrated with A-GPS as well as Voice and Data Communication and WLAN. The ability in GPS fleet management and high-speed data transfer in a single device improves field force automation and increases productivity.

Rugged



1.5m Drop, -20°C to 50°C

BM-150R is built to withstand harsh work environments.

- Withstand multiple 1.5m drops to steel surface
- Operate in a temperature range of -20°C to 50°C

Compatibility



Windows Mobile or Windows CE

BM-150R with Windows Mobile-based operating system makes it easy to install custom applications and access to your work PC. The device allows you to manage real-time information all about work documents, customers, inventory, delivery and much more without any restraints of time or place.

Ergonomic



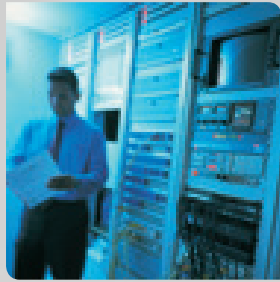
3.5" Touch Screen, Function Keys

- 3.5" display delivers excellent graphic capability and readability.
- Touch screen and function keys provide simple and easy operation.
- Sleek, compact and hand-held device grants you easy control of your work with one hand on the go.

Semi Ruggedized PDA



Finance



Field Force Automation



Logistics



Construction



Government/Public Sector

APPLICATIONS



Parcel Delivery



Order Taking



Public Safety



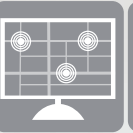
Criminal Tracking



Mobile Learning



Stock Tracking



Fleet Management



Customer Management



Disaster Management



Facility Management



CPU
PXA 270, 520MHz



Memory
128MB RAM 256MB ROM



Battery
3.7V, 1,230mAh, Li-ion
3.7V, 2,460mAh, Li-ion



Bluetooth
Bluetooth Class II V 1.2



GPS
Integrated GPS



Camera
1.3 megapixel



BM-150R

SPECIFICATIONS

PHYSICAL CHARACTERISTICS	
DIMENSIONS (W x H x D)	72.8 x 134.8 x 18.5mm / 2.9 x 5.3 x 0.7 inch
WEIGHT	Excluding battery: 170g / Including standard battery: 190g / Including extened battery: 221g
DISPLAY	3.5" QVGA with backlight, TFT-LCD, 260K, 240 x 320 3.5" VGA with backlight, TFT-LCD, 260K, 480 x 640 (optional)
TOUCH PANEL	Analog resistance type
KEYPAD	Navigation key, Function keys
STANDARD BATTERY	Rechargeable, 3.7V, 1,230mAh, Li-ion
EXTENDED BATTERY (optional)	Rechargeable, 3.7V, 2,460mAh, Li-ion
EXPANSION SLOT	Customer-accessible MiniSD slot for removable memory cards up to 2G
SIM SLOT	1 SIM
AUDIO	Speaker, Headset jack
CAMERA	1.3 megapixel color camera
GPS	Integrated GPS with Network Independent A-GPS
PERFORMANCE CHARACTERISTICS	
CPU	PXA 270, 520MHz
OS	Windows Mobile 5.0 / Windows Mobile 6.1 / Windows CE 5.0
MEMORY	128MB RAM / 256MB ROM
INTERFACE	TTL level, USB 1.1 Host & Client
USER ENVIRONMENT CHARACTERISTICS	
OPERATING TEMP	-20°C to 50°C / -4°F to 122°F
STORAGE TEMP	-30°C to 70°C / -22°F to 158°F
HUMIDITY	93% non-condensing
DROP SPEC	5ft./1.5m drop to steel surface, 2 drops per 6 sides
INTEGRATED RADIO	
WWAN RADIO	GSM / GPRS (850, 900, 1800, 1900 MHz), GSM / GPRS / eGPRS (850, 1900 or 900, 1800, 1900 MHz) / UMTS / HSDPA (2100 MHz) or CDMA / 1x / EvDO
WLAN RADIO	IEEE 802.11b/g
WPAN RADIO	Bluetooth Class II V1.2, IrDA 1.2



ACCESSORIES



Battery

Protection Film

USB Cable

Adapter

Adapter
Connector

Stylus Pen

Bluebird

1242, Gaepo-dong, Kangnam-gu, Seoul, Korea (ROK)

T. +82. 70.7730.8000 F. +82. 2.548.0870

www.mypidion.com www.bluebird.co.kr cn.bluebirdsoft.com

BR-BM-150R-EN-FEB10-V2

Copyright © 2010 Bluebird Soft Inc. All rights reserved.

Bluebird and Pidion are registered trademarks and symbols of Bluebird Soft Inc.

Features and specifications are subject to change without prior notice.



Contact

sales@rm-systems.co.uk
0845 652 0816

Rugged Mobile Systems
Sandbach Enterprise Centre
Wesley Avenue
Sandbach
Cheshire
CW11 1DG